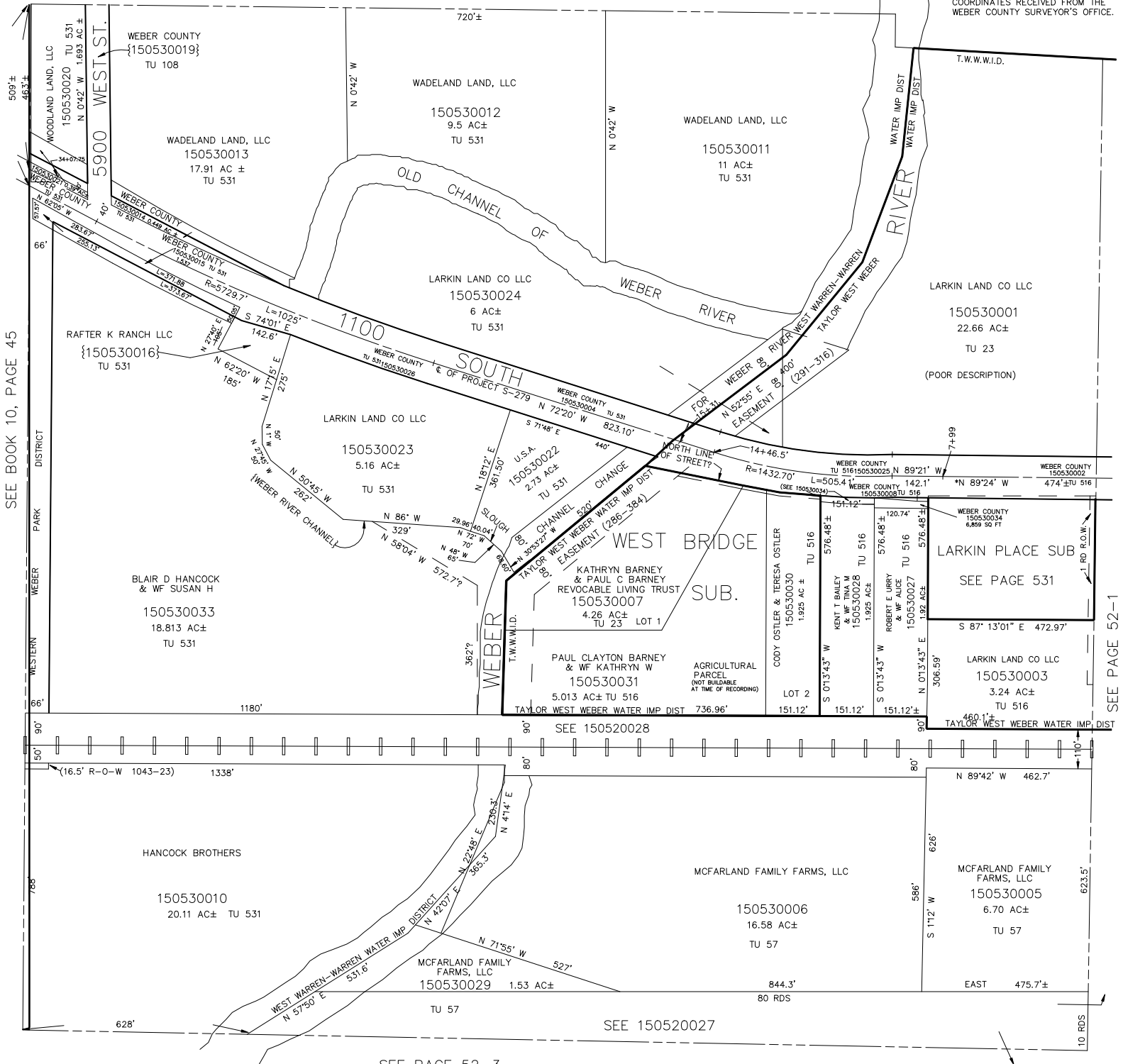


N.W. 1/4
SECTION 19, T.6N., R.2W., S.L.B. & M.
IN WEBER COUNTY

TAXING UNIT: 23, 57,108,516,531 SEE PAGE 51-3 SCALE 1" = 200'

BEARINGS & DISTANCES FOR SECTION LINES, DETERMINED BY STATE PLANE COORDINATES RECEIVED FROM THE WEBER COUNTY SURVEYOR'S OFFICE.



SEE BOOK 10, PAGE 45

SEE PAGE 52-1

SEE PAGE 52-3